

WINNER DALSOUPLE 100% RUBBER

VIEW FROM STREET

PROJECT

RUBBER BANDED HOUSE

TYPE

NEW CONSTRUCTION

LOCATION

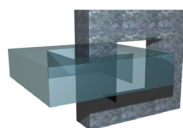
RALEIGH, NC

DATE

2003

SIZE

2400 SQ.FT.



PROGRAM LOOPS

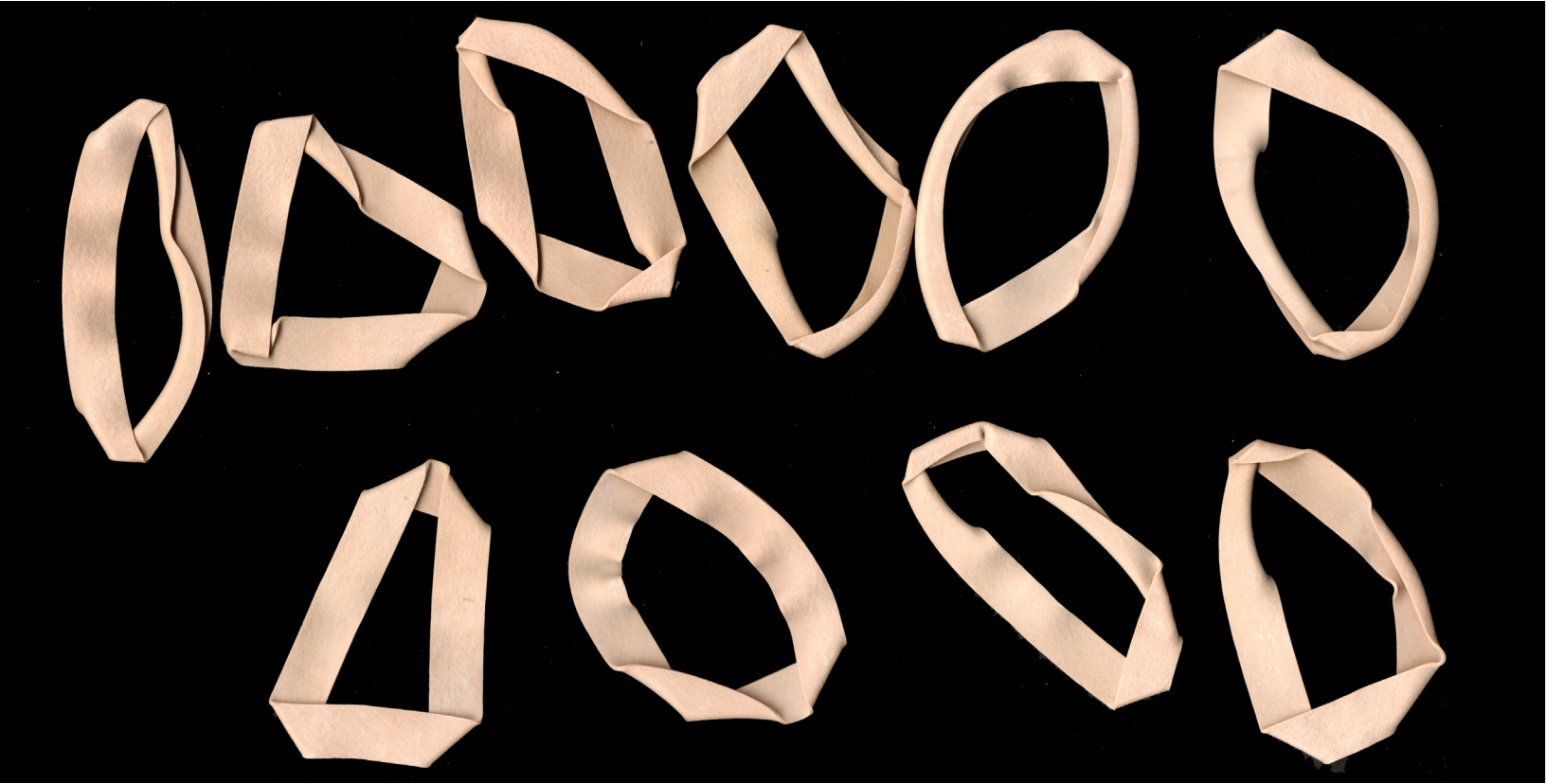
Surface, through its formal and material investigation, defines the premise of the rubber-banded house. Set in a suburban single-family house neighborhood inside the beltline of Raleigh, North Carolina, the rubber-banded house depends upon a mutable wall surface to simultaneously define the form and function of the residence's public space. The character of the architecture and the formal response of its spaces are governed and inspired by the flexible scrim. The surface creates enclosure and place. The form of a house defines two modes of the domestic realm: public and private. The activities within each realm orchestrate and activate the formal enclosure. The private occurs in the opaque vertical loop that allows the penetration of light and view while revealing the intimate actions of interior to exterior. The public is a transparent glass layer enclosing a public horizontal loop. Three woven rubber-band walls operate, flexing space, transparency and light within this living corridor. Their activity governs space by orchestrating event and composing form. The diagram of the house is founded on three interior walls fabricated out of a movable matrix of delicate steel cable supports fixed in movable glides and then woven together with an elastic membrane of common rubber bands.



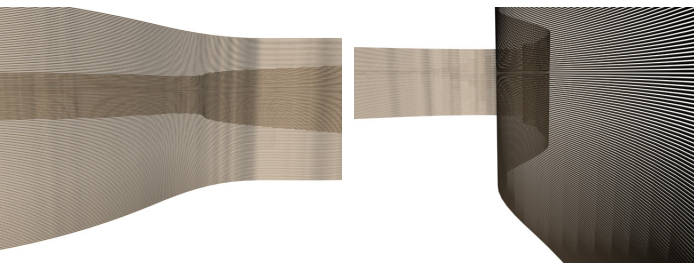
BORDEN PARTNERSHIP

1918 LAUDERDALE STREET
HOUSTON, TEXAS 77030

www.bordenpartnership.com



RUBBER BANDS



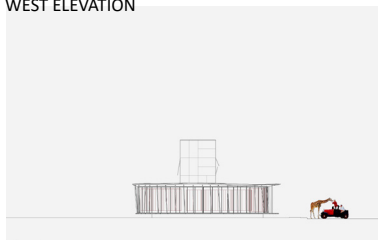
RUBBER BANDED WALL CONFIGURATIONS - LATTICE FIELD



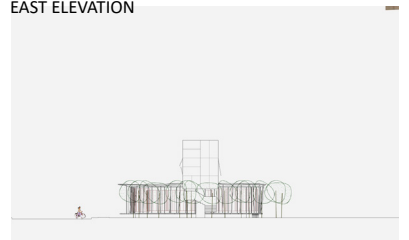
SOUTH ELEVATION

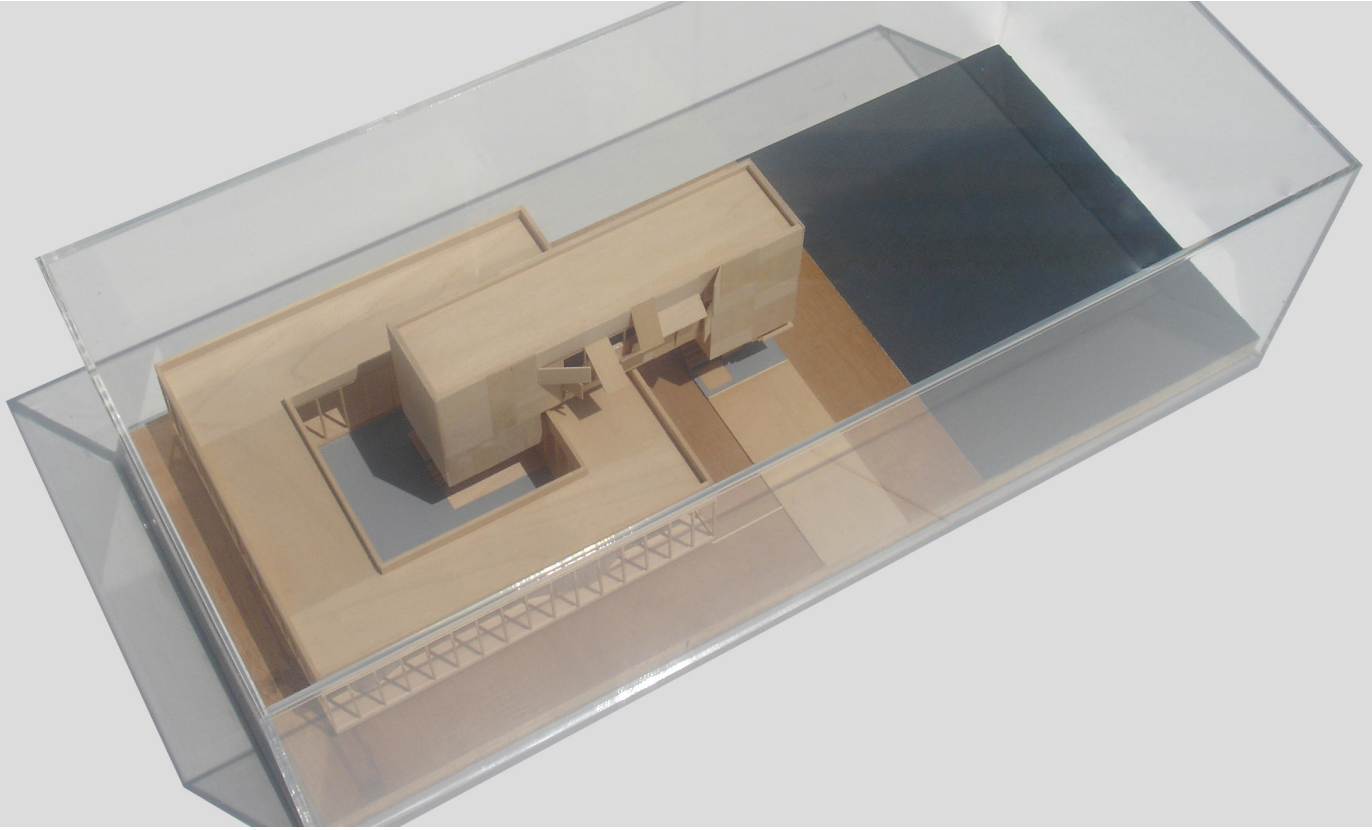


WEST ELEVATION

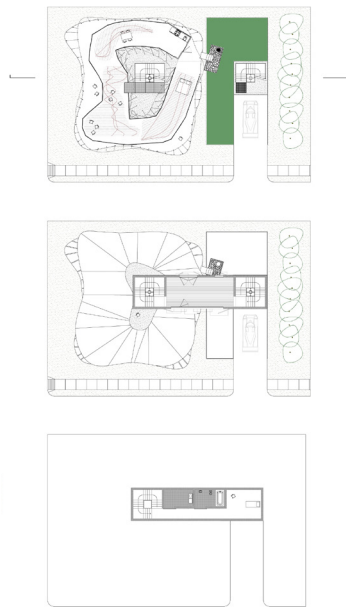


EAST ELEVATION



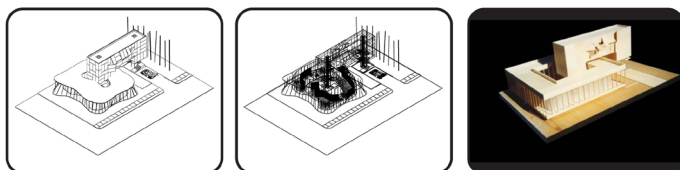


RUBBER-BANDED HOUSE

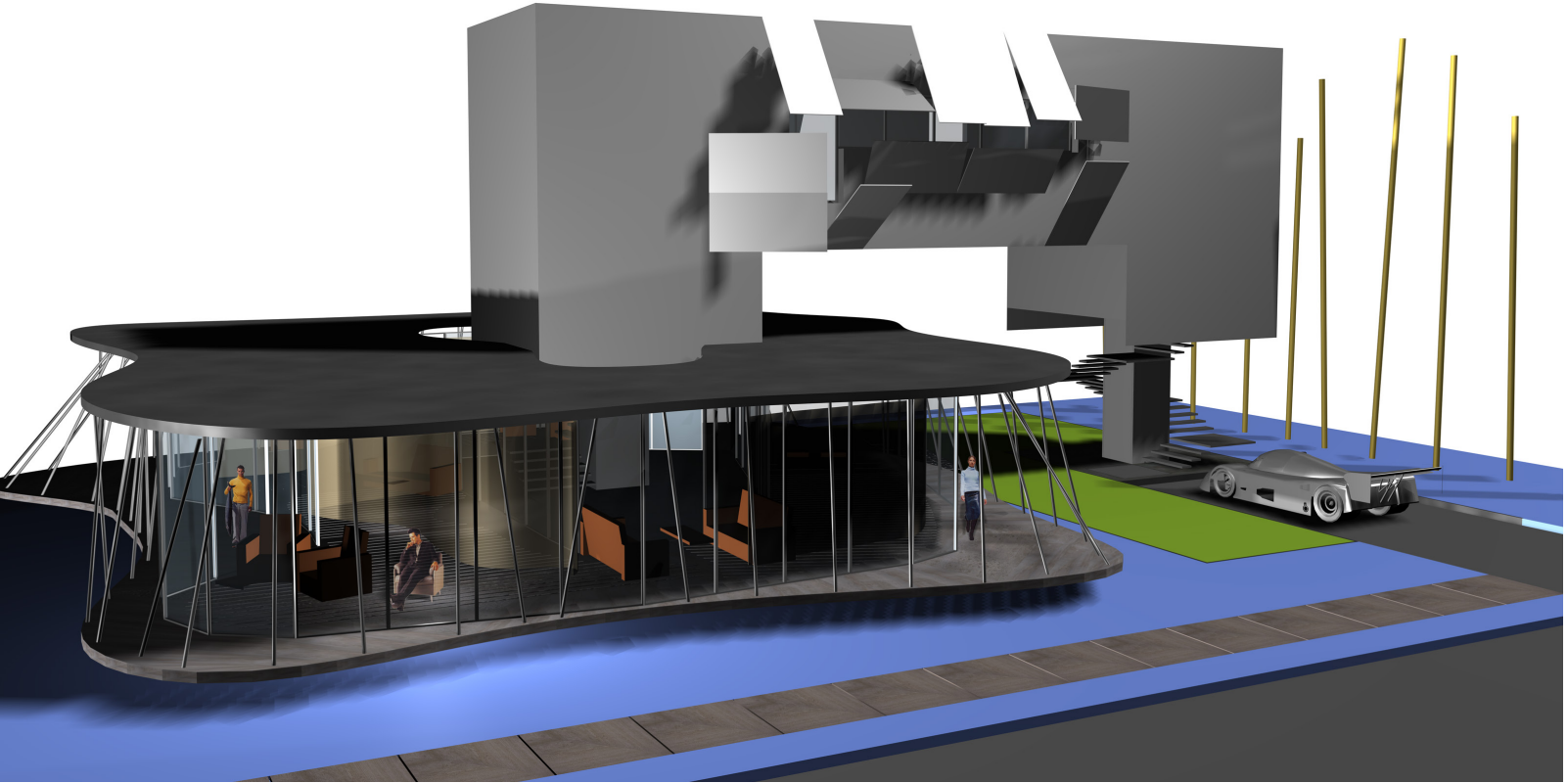


PLAN LEVEL 002-001-000

AXO - X-RAY - MODEL

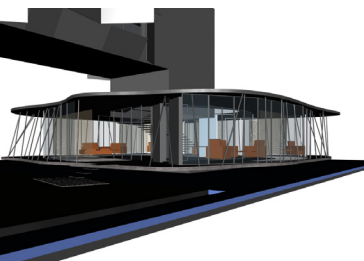


These mutable figures establish an elastic surface that provides privacy, filters light, establishes scale, defines space and adjusts emotion by riding through the house in response to the actions of the inhabitant. The membrane, as a continuous system, adopts the interaction of single point of interface across the entirety of its surface. The residual spaces are governed by the flexible surface of enclosure. The flexibility of the material surface creates a flexibility of the plan to allow a transparency of occupancy. The suburban home is transformed through the interaction of occupant and material. A re-interpretation of the single-family home allows for an investigation of the domestic landscape. Split between the public and the private, the house became a double helix. Their adjacency allows for a bridge between the public social face and the private intimate realm. The private is a solid ring, cloaked in birch plywood. The facade cracks back at distinct moments to reveal apertures beneath the patterned skin. Dealing with a sectional arrangement, the ends become vertical circulation spaces with the upper deck as a privileged vantage of private living, and the lower subterranean level as protective sleeping and bathing. The in-between realm of the public is perpetually traversed to link the inhabitant to the social contract of societal participation. The between realm exists in a dual interior and exterior condition. The traditional yard and elevated porch become exterior public spaces, housing a patio for grilling, and an auto court in addition to the cultivated lawn and alley of tress. The interior realm is enclosed within an undulating glass ring - responding to the movement of the interior operable walls. The interior encircles a central gravel courtyard. The inner public space, as a continuous loop folding around itself, has three rubber partition walls. Constructed out of a series of operable vertical structural poles, encompassed in a woven flexible rubber membrane of standard rubber bands, the wall is able to undulate base on desire. The architecture physically reacts to the occupation. Vertical poles, running from floor to ceiling hold alternating hooks upon which the rubber band is stretched. The poles are inset in a sliding track in the floor and ceiling, laterally spaced based upon the minimum tension of the elastic range of the rubber band. As a force is applied to a single point along a pole, the rubber band deflects, ultimately drawing the adjacent poles with it approximating the force across the remainder of the membrane. The action causes a diffused reaction across the entire surface. The suburban house becomes uniquely American in its identity. The realm of the individual is defined and demarcated by an architecture that celebrates our social rituals. The mutable surface of inter-laced rubber bands, overlaid with the program and activities of the domestic realm fabricate the collective composition of the rubber-banded house.

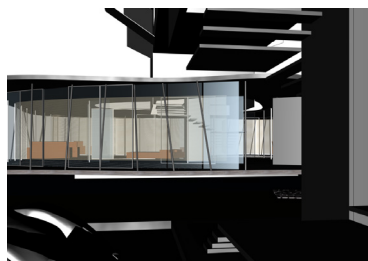


ELEVATED VIEW FROM STREET

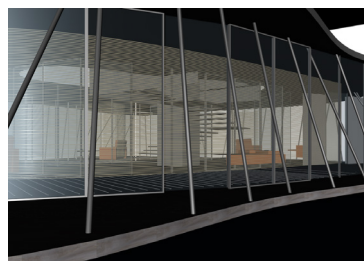
INVERTED VIEW

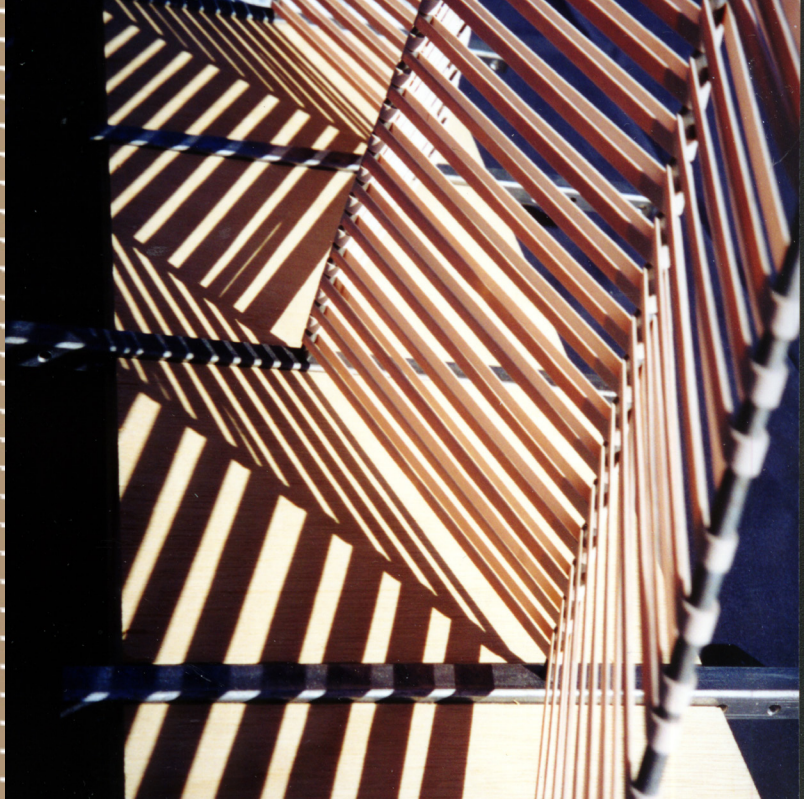
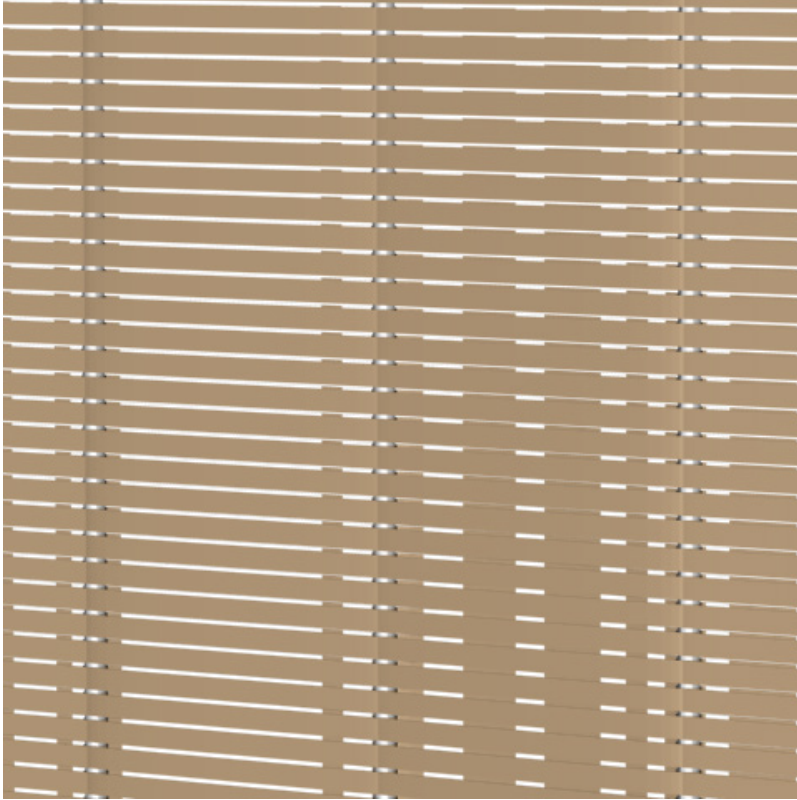


CARPORT

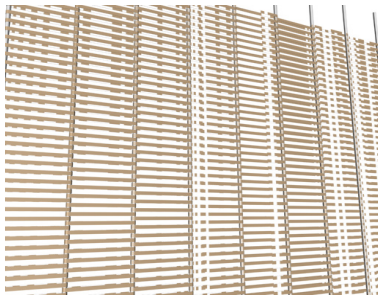


PORCH DEFLECTION

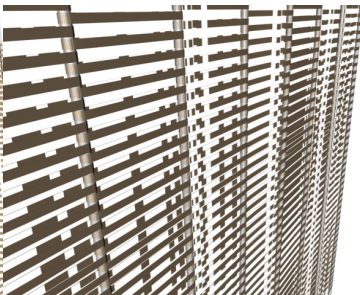




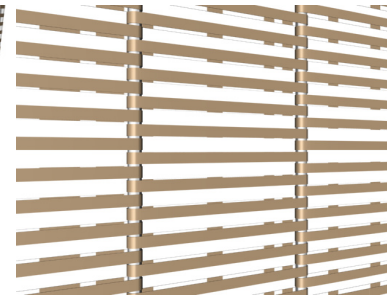
MUTABLE LATTICE - PROTOTYPE [FULL SCALE MOCK-UP]



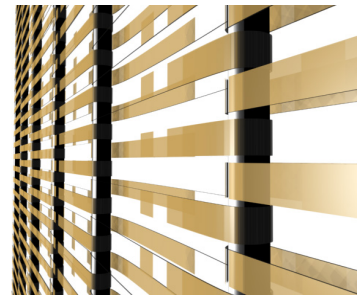
VIEW FROM DRIVEWAY



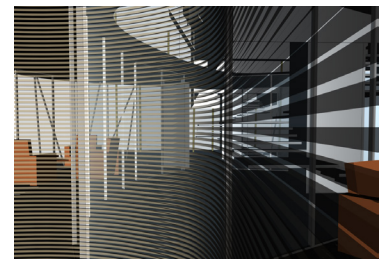
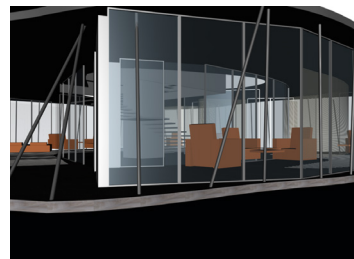
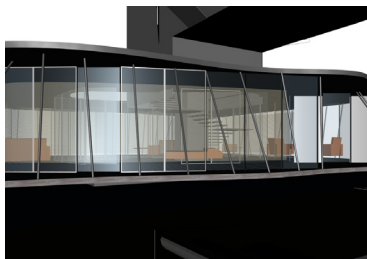
PORCH VIEW

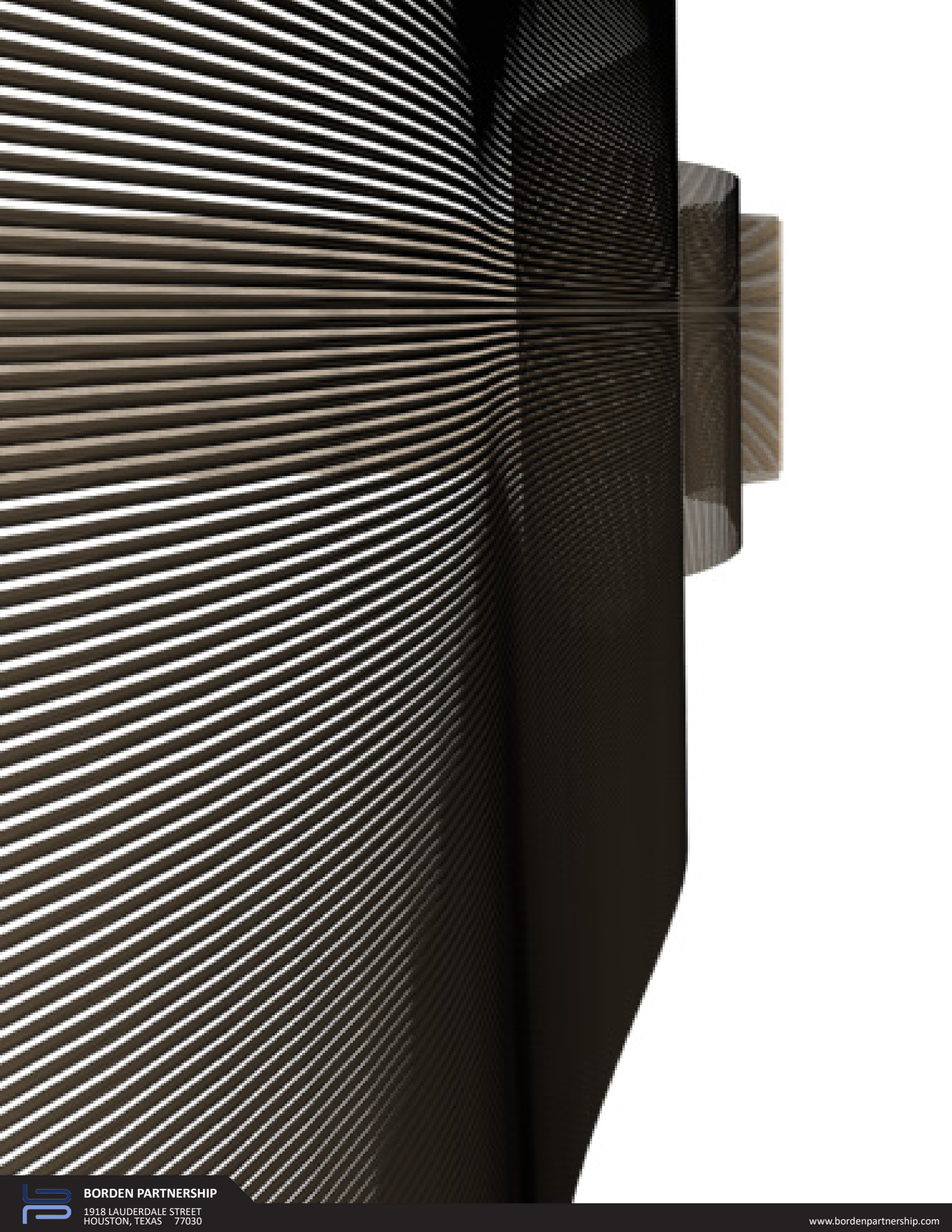


LAYERED SURFACES



BRISE SOLIEL

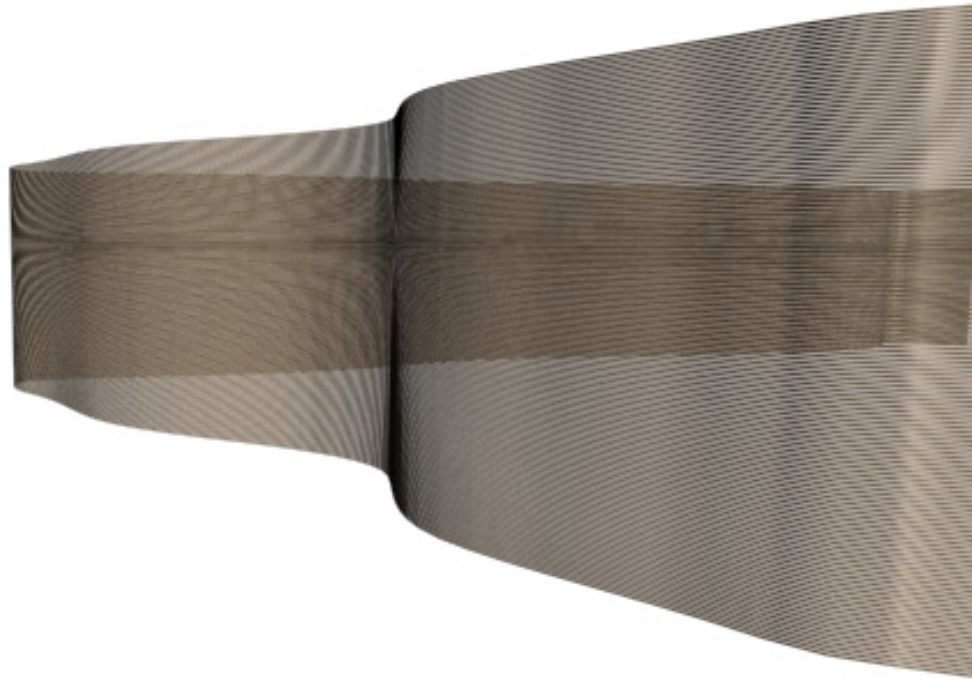




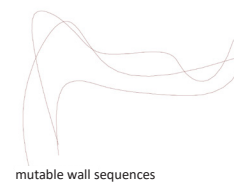
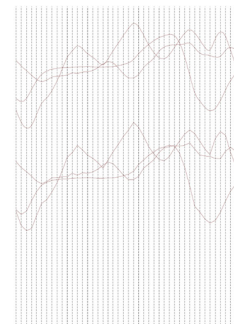
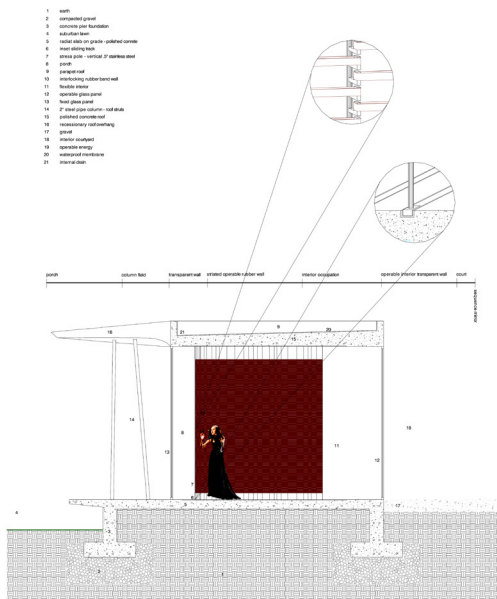
BORDEN PARTNERSHIP

1918 LAUDERDALE STREET
HOUSTON, TEXAS 77030

www.bordenpartnership.com



RUBBER BANDED WALL DETAILS AND CONFIGURATIONS

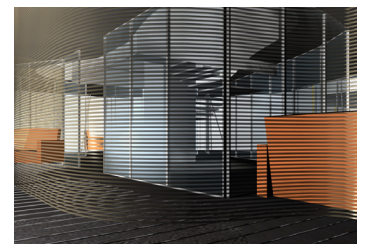
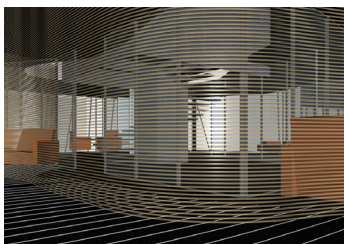


MUTABLE WALL

TRANSPARENT SURFACE

INTERIOR LAYERS

RUBBER BANDED WALL





POSITION 1



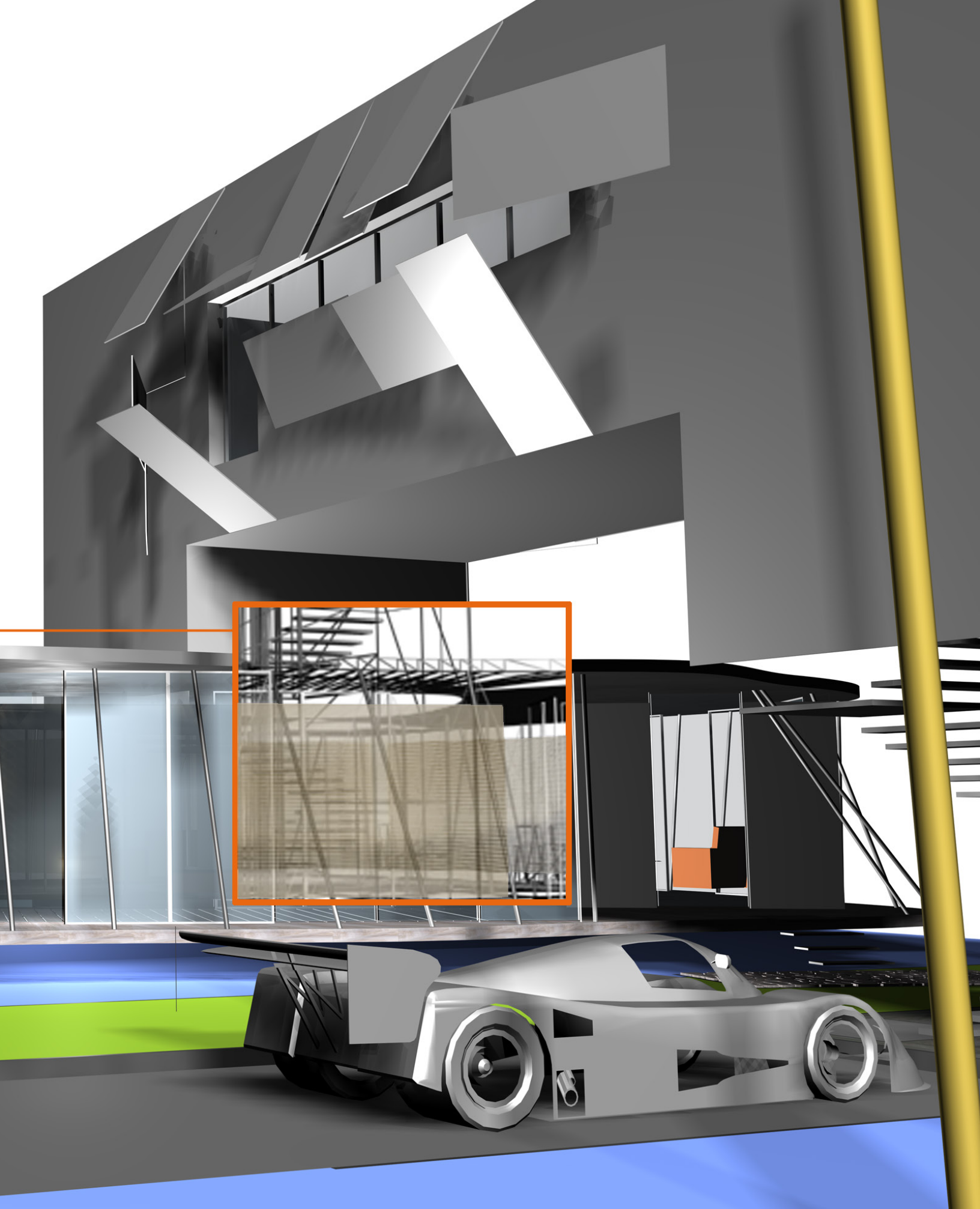
POSITION 2



POSITION 3

x-ray





WEST ELEVATION



BORDEN PARTNERSHIP

1918 LAUDERDALE STREET
HOUSTON, TEXAS 77030

www.bordenpartnership.com



LATERAL SECTIONS



BORDEN PARTNERSHIP

1918 LAUDERDALE STREET
HOUSTON, TEXAS 77030

www.bordenpartnership.com

LONGITUDINAL SECTIONS

BORDEN PARTNERSHIP

1918 LAUDERDALE STREET
HOUSTON, TEXAS 77030



TOWER LOFT



BORDEN PARTNERSHIP

1918 LAUDERDALE STREET
HOUSTON, TEXAS 77030

www.bordenpartnership.com



PERFORMATIVE SECTION



BORDEN PARTNERSHIP

1918 LAUDERDALE STREET
HOUSTON, TEXAS 77030

www.bordenpartnership.com

